

# Sunvozertinib Outperforms Chemotherapy in Frontline *EGFR* Exon 20 Insertion-Positive Advanced NSCLC

Phase 3 WU-KONG28 Study | ASCO 2026

## Patient Population



- Treatment-naive advanced/metastatic nonsquamous non-small cell lung cancer (NSCLC)
- *EGFR* exon 20 insertion mutations
- ECOG PS 0-1

## Trial Design

### Phase 3 WU-KONG28

**Arm A**  
Sunvozertinib 300 mg daily  
n = 163

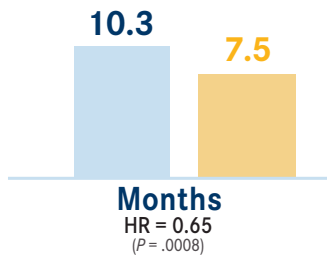
**Arm B**  
Carboplatin + Pemetrexed  
n = 161

Primary End point: Progression-Free Survival (PFS)

## Median PFS



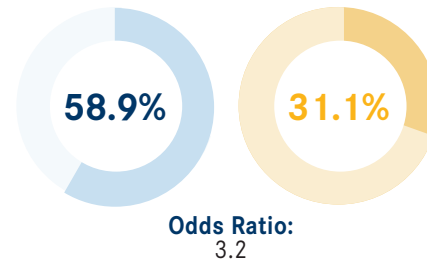
**35% Reduction** in Risk of Progression or Death



## Objective Response Rate (ORR)



**Nearly 2x** Higher Response Rate



## Duration of Response (DOR)



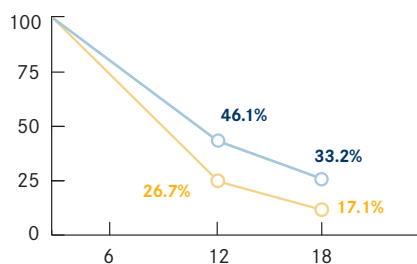
**+4.1 Months** Longer Response Duration



## Landmark PFS Rates



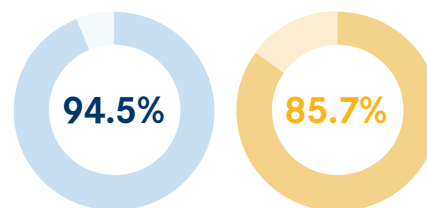
**More Patients Remained Progression Free Over Time**



## Disease Control Rate (DCR)



**Sunvozertinib** Had a Higher DCR



## PFS2



**Time to second progression or death**



## Addressing an Unmet Need

- *EGFR* exon 20 insertions represent approximately 12% of *EGFR*-mutated NSCLC.
- More than 100 exon 20 variants have been identified.
- No *EGFR* tyrosine kinase inhibitor had previously been approved in the frontline setting for this population
- Sunvozertinib is a **single-agent oral targeted therapy**

## Most Common Treatment-Related Adverse Events

Adverse Event	Any Grade	Grade ≥3
Diarrhea	84.0%	13.5%
Increased creatine kinase	55.2%	20.2%
Rash	51.5%	0.6%
v	48.5%	3.7%

No treatment-related deaths reported with sunvozertinib

## WU-KONG28 Primary Analysis

Sunvozertinib significantly improved PFS, ORR, and DOR vs platinum-based chemotherapy, supporting its potential role as a new first-line treatment option for patients with *EGFR* exon 20 insertion-positive advanced NSCLC.